



2025/26 SEASON DSS POST-CHRISTMAS PENNANT

Hosted by Sandy Bay Sailing Club

Sailing Instructions

Definitions:

[DP] means a rule for which the penalty is at the discretion of the Protest Committee and may be less than DSQ

[NP] means that a breach of this rule will not be grounds for protest by a boat

[SP] means that for a breach of this rule a standard penalty may be applied by the Race Committee without a hearing

1. Organising Authority

The Organising Authority is the Sandy Bay Sailing Club (SBSC).

2. Rules

All races are governed by the *rules* as defined in *The Racing Rules of Sailing (RRS) 2025-28*. There may be on-water rules observers, who may notify competitors on the water that a rule breach was observed. In this case competitors may consider taking a penalty at the time or initiating a protest. Protests arising from these observations may be initiated by the Protest Committee under RRS 60.3.

3. Notices to Competitors

Notices to competitors will be posted on the official online notice board located at <https://www.sandybaysailingclub.org.au/pennant/>

4. Changes to Sailing Instructions

Any change to the sailing instructions will be posted 90 minutes before the race in which it will take effect, except any change to the schedule of races will be posted by 1800 on the day before it takes effect.

5. Signals Made Ashore

- 5.1. Signals made ashore will be displayed on the flag mast at the SBSC Starting Box.
- 5.2. Flag AP with two sound signals means 'The race is postponed. The warning signal will be made not less than 30 minutes after AP is lowered.' This changes Race Signals.
- 5.3. [SP][NP] Flag D with one sound means 'The Warning Signal will be made not less than 30 minutes after D is displayed.' Boats shall not leave the shore until this signal is made.

6. Schedule of Races

- 6.1. The schedule of races is per the Notice of Race, found on the official online notice board: <https://www.sandybaysailingclub.org.au/pennant/>

7. Starting Times

- 7.1. The Warning Signal for the first race of the first class will be no earlier than 1300. Any change to the schedule or starting times will be posted in accordance with SI 4 'Changes to Sailing Instructions'.
- 7.2. Races will ordinarily be conducted back-to-back, with subsequent races commencing approximately 5 minutes after the last competitor of that fleet has returned to the starting area.
- 7.3. Up to 4 races will be conducted on each day of racing.

8. Class Flags

CLASS	CLASS SIGNAL
Int. Optimist (Intermediate/Open)	Optimist Class Flag
International Cadet	Code Flag 'Y'
ILCA 4, ILCA 6 & ILCA 7	Laser Class Flag
29er/49er FX	29er Class Flag
Waszp/IQ Foil Board	Waszp Class Flag
Sailboards	Windsurfer Class Flag

9. Racing Area

Refer to the SI – Addendum A Racing Area.

10. Courses

- 10.1. Refer to SI – Addendum B Courses & Marks which shows the order in which marks are to be passed and the side on which each mark is to be left.
- 10.2. No later than the first warning signal the Race Committee will display the course to be sailed on the course board at the stern of the Committee Boat

11. Marks

- 11.1 Marks are described in Addendum B Courses and Marks

12. The Start

- 12.1. The following schedule changes RRS 26.

Signal	Flag and sound	Minutes before starting signal
Warning	Class flag, 1 sound	3
Preparatory	P,U or Black, 1 sound	2
One-minute	Preparatory lowered, 1 long sound	1
Starting	Class flag removed, 1 sound	0

- 12.2. If there are small class numbers, the Race Committee may combine two or more classes.
- 12.3. The RO may alter the starting order at any point to avoid unreasonable delays. Changes in order will be notified through the warning flag raised.
- 12.4. Boats whose preparatory signal has not been made shall keep clear of the starting area and of all boats whose preparatory signal has been made.
- 12.5. [DP] A boat starting later than four (4) minutes after her starting signal will be scored DNS. [NP]

13. The Starting line

- 13.1 Starting line will be between an orange staff displaying an orange flag on the Race Committee Boat at the starboard end, and a fisherman's buoy bearing an orange flag at the port end.

14. Change of the Next Leg of the Course

- 14.1. Changes to course during a race will be conducted as per RRS 33. The original mark will be moved (a change of course mark will not be used).
- 14.2. Where a mark has only been repositioned an amount deemed to be minor by the RO notification of competitors as per RRS 33 may be omitted at the RO's discretion. (NP)

15. The Finish

- 15.1. **Finish 1** will be between an orange staff displaying an orange flag on the Race Committee Boat at the starboard end, and a fisherman's buoy bearing an orange flag at the port end.
- 15.2. **Finish 2** will be between a blue flag on the Race Committee Boat at the starboard end and a fisherman's buoy bearing a checkered flag at the port end.
- 15.3. **Code Flag 'L'** when flown from a Race Committee Boat at the finish means 'Another Race will start as soon as practical.' This changes Race Signals.

16. Target Times & Time Limits [NP]

- 16.1. Target times will be approximately 20-40 minutes.
- 16.2. The time limit for the first boat finishing for each class will be 50 minutes.
- 16.3. The Finish Window is 15 minutes after the first boat of the class finishes the race. This changes RRS 35. This is amended as per the below at the discretion of the RO.
- 16.4. Boats still deemed to be racing but outside the finish window may be scored an allocated place based on their position when the time limit expires. Such boats may be directed to return to the start area or other location without crossing the finish line. Neither the allocation of a finish place nor the failure to allocate a finish place will be grounds for redress. This changes RRS 35, RRS 61.1, RRS Appendix A5.1, A5.2 and A10.

17. Protests

- 17.1. Protests shall be written on forms available at the SBSC Race Office and returned there within the time limit
- 17.2. The Protest Time Limit is sixty (60) minutes after the last boat has finished the last race of the day, or the RO has signalled no more racing today, whichever is later.
- 17.3. Boats wishing to protest under Part 2 of the RRS or RRS 31 must hail their intention to do so to the Race Committee Boat before leaving the vicinity of the finish. Boats must ensure that their hail is acknowledged by the sailing staff on the Race Committee Boat.

- 17.4. Protests will be heard in approximately the order of receipt.
- 17.5. Protest notices will be posted within 30 minutes of the protest time limit to inform competitors where and when there is a hearing in which they are parties or named as witnesses.

18. Arbitration

RRS Appendix T applies to SBSC Races and is amended so that an Arbitrator can form part of a subsequent Protest Committee.

19. Pennant Scoring

- 19.1. The Low Point scoring system of Appendix A will apply, modified so that each boat's series score will be the total of her race scores, with her:
 - worst score discarded if six (6) or more races are completed
 - two (2) worst scores if nine (9) or more races are completed
 - three (3) worst scores if twelve (12) or more races are completed
- 19.2. Rule A5.3 of RRS Sailing 2025-2028 (Appendix A) Scoring will apply for pennant racing
- 19.3. Pennant points accrue to the helm.

20. Safety Regulations

- 20.1. Competitors must wear lifejackets at all times whilst afloat, except whilst briefly adjusting clothing or personal equipment.
- 20.2. The race committee will endeavor to communicate all issues around safety on VHF Channel 15. Where not available channel 13 may be used.
- 20.3. Boats shall not leave the shore at SBSC until the D flag is raised – See signals made ashore & SI 5.3, See SI 20.6 below for boats leaving from other clubs. [SP] [NP] [DP]
- 20.4. **Boats launching from SBSC** shall “tag on” prior to leaving shore. Boats returning to SBSC shall “tag off” upon returning to shore after a session of sailing. This must be done within 60 min of the finishing time of the last boat on the racecourse. [SP] [NP] [DP].
- 20.5. Tags should list the name of the helm (and crew where applicable), their contact number (used when solo sailing) and their NOK contact name/number. Tags are available at the race office.
- 20.6. **Boats launching from other Clubs** should contact the shore patrol officer at SBSC to notify them of their intent to race and estimated time of departure from the shore. The Shore Patrol officer will notify on channel 15 (or via other arranged method) the timing of when the D flag is raised for sailors leaving SBSC. However, it is the responsibility of sailors leaving from other clubs to ascertain whether it is safe to sail to the racecourse. Where there is

uncertainty the RO or SBSC Shore officer may be contacted on Channel 15 (preferred) or mobile phone.

- 20.7. **Committee Boat Sign On:** Prior to starting the first race of a session, **ALL** boats shall report to the Race Committee Vessel (RCV) once on station by hailing their sail number, and having their hail acknowledged by the staff on the Race Committee Boat. Failure to comply with this Sailing Instruction may result in action by the Race Committee.
- 20.8. **Boats retiring or leaving the course area** for any reason shall inform the Race Committee Boat either in person, or through a safety or coach boat at the earliest possible opportunity. Where a crew chooses to retire from a completed race, for example due to sailing the incorrect course or not taking a penalty, they should notify the Race Officer at the first available opportunity and complete a retirement form at the race office once ashore.
- 20.9. [DP][NP][SCP] Failure to Tag On or report to RCV at the start of a session will result in that boat being penalised five (5) places for the first race of the session (but not worse than DNF). Failure to Tag Off within the Protest Time Limit will result in that boat being penalised five (5) places for the last race of the session (but not worse than DNF). Penalties will be applied without a hearing. This changes Rule 63.1
- 20.10. **Outside assistance from rescue craft:** Race Officials and Race Committee vessels may retrieve boat crews and return them to their boats or assist in other ways for crew safety as deemed necessary by the rescue craft. The sail number of a boat which receives outside help will be notified to the RO with details of the incident. Depending on the assistance required, a hearing may be held to determine any penalty. This changes RRS 41.
- 20.11. **Support and spectator craft** should notify the RO on VHF 15 of their presence in the race area and provide a mobile phone number as an alternate contact. They should keep a listening watch on Channel 15 whilst in the area and may be called upon to assist with monitoring boats in distress or assisting where necessary and practical.
- 20.12. **Special safety equipment**
- 20.12.1.1. **Safety Knife** - To reduce the risk of harness entrapment, it is recommended sailors in classes with trapeze carry a sharp, well maintained and easily accessible knife, preferably serrated and blunt tipped. All crew should know where the knife is located and are prepared to use it to cut a harness, trampoline mesh or other entanglement in the event of entrapment.
- 20.12.1.2. **Helmets** – All sailors in foiling classes must wear a class compliant sailing helmet. Helmets are also encouraged for learning sailors or in strong wind conditions.
- 20.12.1.3. **Whistles** – All sailors must carry a pea-less whistle.

21. Prizes

- 21.1 Trophies will be awarded for Club pennants per NOR 13
- 21.2 The winner of the pennant series shall be entered on the Pennant Shield in the Clubhouse.
- 21.3 For boats using multiple crews during the season or a series, trophies will be awarded to both helm and one crew nominated by the helm.

22. Other Trophies

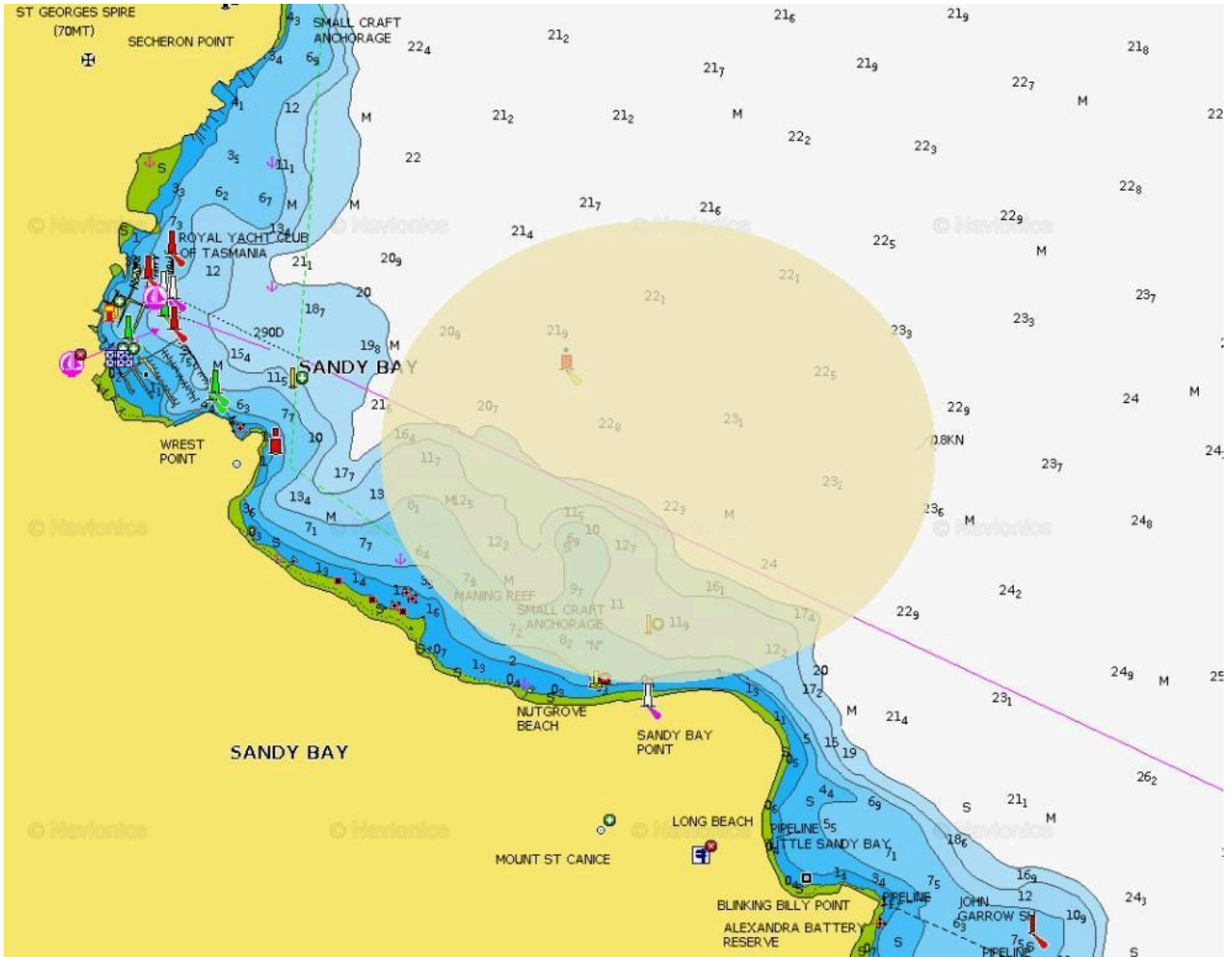
The Sailing Committee may decide to award any of the following trophies based on performance in the pennant series. These awards include: Geoffrey Corkhill Memorial Trophy for Best Cadet Forward Hand; Peacock Trophy for Best Club Person of the Year; Michael Peck Trophy for Best Young Club Person; and Muir Trophy for Most Improved.

23. Liability

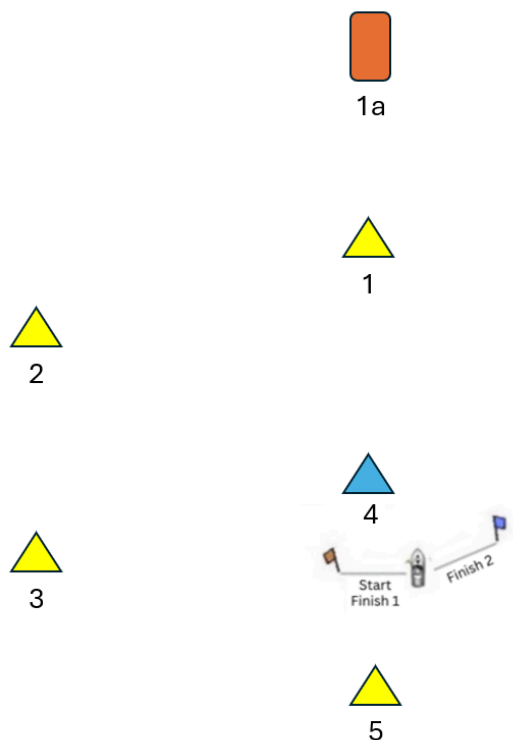
All persons taking part in all races, whether as entrants or otherwise, do so at their own risk and responsibility. The Clubs are not responsible for the seaworthiness of a boat whose entry is accepted or the sufficiency or adequacy of its equipment. The Clubs reserve the right to refuse or withdraw an entry.

Attention is drawn to RRS Fundamental Rule 3 which states: 'The responsibility for a boat's decision to participate in a race or to continue racing is hers alone'.

Addendum A – Course Area



Addendum B – Course and Marks



All marks to be left to port

Positions are approximate only

- Marks 1, 2, 3 and 5 will be yellow pyramid inflatable buoys.
- Mark 1a will be an orange inflatable buoy.
- Mark 4 is a blue inflatable buoy.
- Existing marks will be moved for change of course.

International. Optimist - Intermediate Course 1 Course 2	Start - 1 - 2 - 3 - Finish 1 (Note does not round 5) Start - 1 - 4 - Finish 2
International. Optimist - Open Course 1 Course 2	Start - 1 - 2 - 3 - 5 - Finish 1 Start - 1 - 4 - Finish 2
International Cadet Course 1 Course 2	Start - 1 - 2 - 3 - 2 - 3 - 5 - Finish 1 Start - 1 - 4 - 1 - 4 - Finish 2
ICCA 4, ILCA 6 & ILCA 7 Course 1 Course 2	Start - 1a - 4 - 1a - 2 - 3 - 5 - Finish 1 Start - 1a - 4 - 1a - 4 - Finish 2
29er/49er FX Course 1	Start - 1a - 4 - 1a - 4 - Finish 2
Waszp/IQ Foil Board Course 1	Start - 1a - 4 - 1a - 4 - Finish 2
Sailboards Course 1	Start - 1 - 4 - 1 - 4 - Finish 2